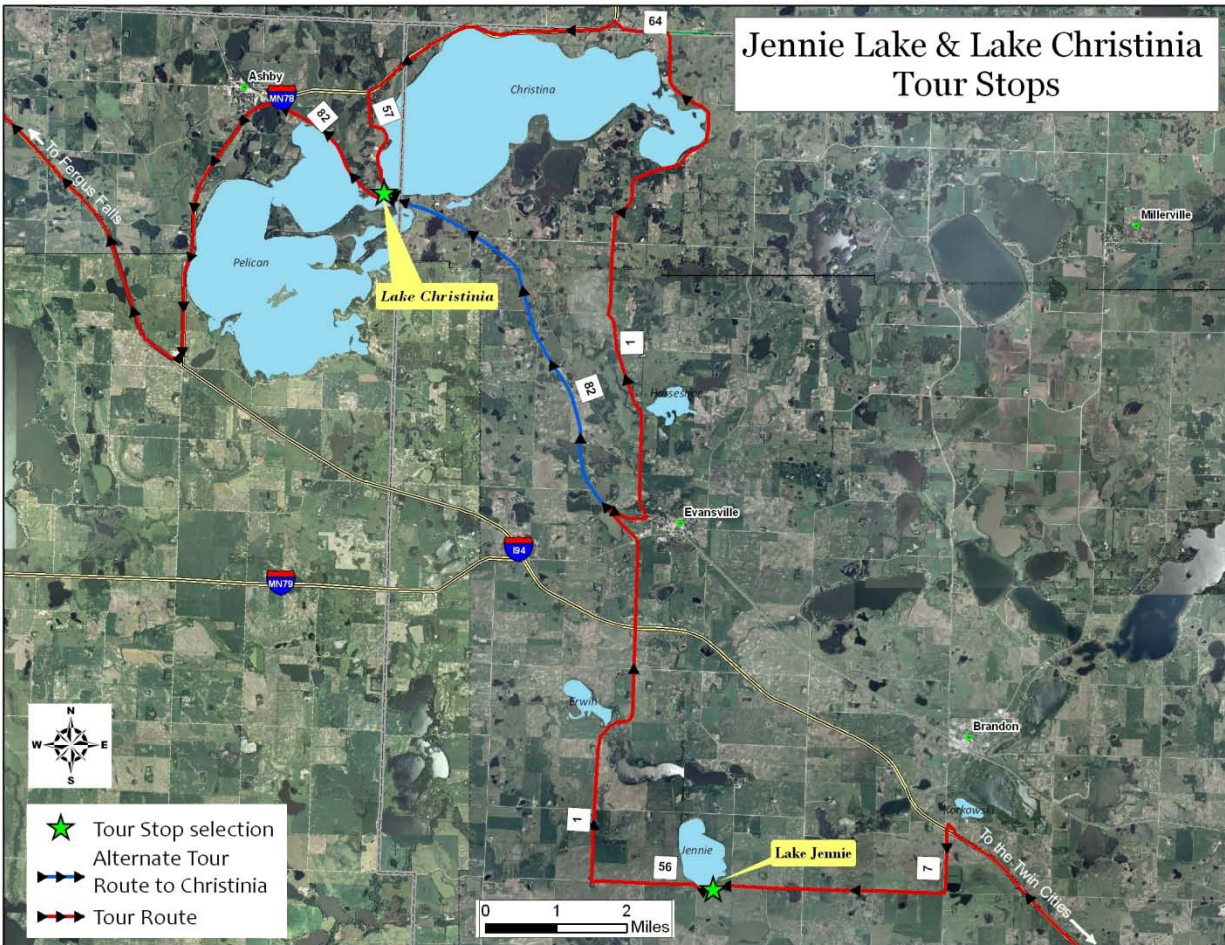


## Driving Directions for Fergus Falls area site visits

### To Lake Jennie and Lake Christina



### To Dead Lake

Directions to Dead Lake from Lake Christina area

- 1) Take State Highway 78 north through Battle lake
- 2) Go about 3.5 miles north of Battle Lake and take a left on Co. HWY. 72
- 3) Go about 2.5 miles on Hwy 72 and take right on Co. Hwy 83
- 4) Go about 500 feet on Co. Hwy 83 to T and take right on Co. Hwy 1
- 5) Go about 5.5 miles on Co Hwy 1 to Co Hwy 14, take left on Hwy 14 toward Richville
- 6) Go about 6 miles on Co. Hwy 14 and take left on Co. Hwy 44.
- 7) Go 3 miles west on Co 44 and take left on 370<sup>th</sup> St.
- 8) Go 1 mile on 370<sup>th</sup> St. and take left on Murray Road.
- 9) Follow Murray Road for about ¾ mile to WMA entrance.

### To Manston Slough

Interstate 94 (I-94) to Rothsay exit. From Rothsay, take County Road (C.R.) No. 26 to the west. C.R. No. 26 is about ½ mile south of I-94, on County Road No. 21. Go west on Co. Rd. 26 for 10 miles, to the intersection of C. R. No. 26 and MN Trunk Highway No. 9 (T.H. 9.)

### To Bluestem Prairie

From Mn Trunk Highway No. 9, head north for 13.6 miles to Mn Trunk Highway 34. Turn left at Front St N/MN-9 N. Continue to follow Mn-9 N - 14.7 mi to the intersection of Mn-9N and 140<sup>th</sup> St. S.